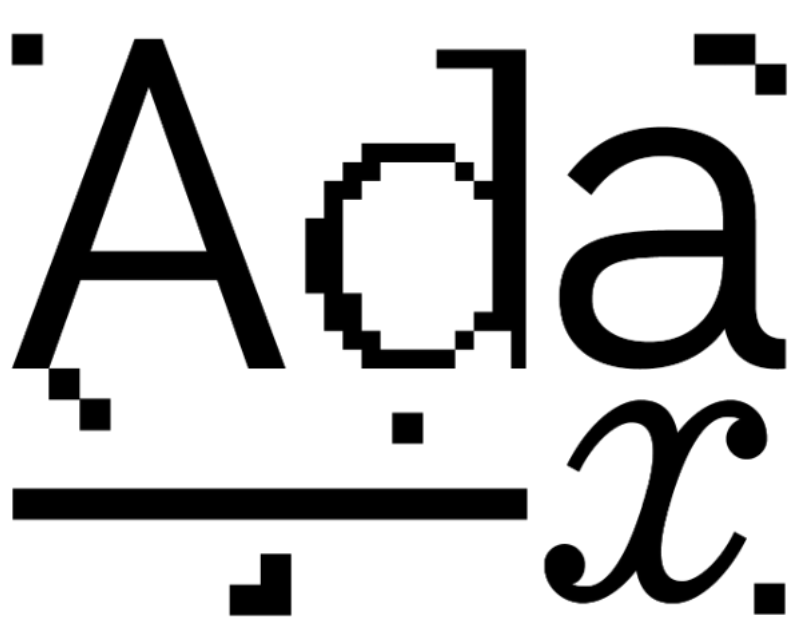
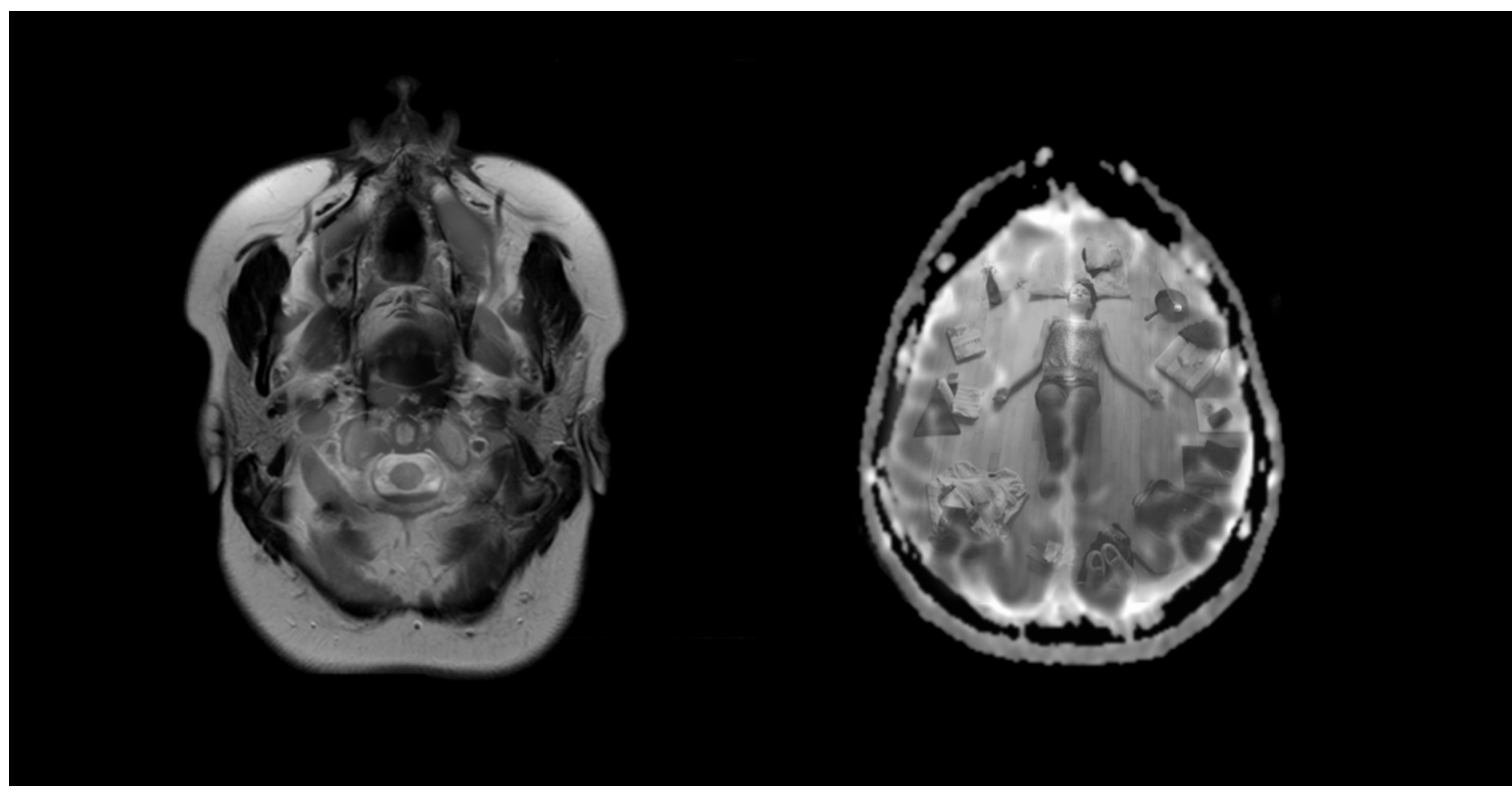


[View this email in your browser](#)



We are opening to the public for Salima Punjani's exhibition *Progression* starting Thursday April 22. Reserve a time slot [via this link](#). Don't miss a discussion with the artist, curator Tamar Tembeck and one of the project's participants, Patricia Rivas, on Thursday, April 29 (register [via this link](#)). On May 11, take part in a sensory listening workshop with the artist.



exhibition

Progression, Salima Punjani
Exhibition from April 22 to May 21
Tuesday – Friday, 12pm – 5pm
⇓ Ada X, 4001 Berri st, # 201
Register for an exhibition visit via [this link](#).
Visits in the presence of the artist on Thursdays from 5pm to 7pm and Saturdays April 24 and May 8 from 12pm to 5pm.
Discussion with the artist on Thursday, April 29 at 5pm.
Register via [this link](#).

Punjani creates artwork with care and consideration for access. *Progression* is a real-time, interactive, multi-sensory installation reflecting the narratives of people with multiple sclerosis along with their own EEG and MRI brain scans. From dealing with cognitive decline and unpredictability to challenging stereotypes, each participant had agency over their story and how they wanted to be seen.

[READ MORE](#)



workshop

Sensory Listening Workshop
With Salima Punjani
Tuesday 11 may (Time TBD)
FREE | Registration required
English (French translation available)
⇓ Zoom

Join us for a listening party with artist Salima Punjani ! More like a rest-stop than a work-shop, this event is inspired by *Progression*, Salima's installation and research at Ada X. Participants will collect sounds, songs, and soundscapes that put them at ease. This collection will become the community-generated playlist for an unusual listening experience : using transducer kits, we will hear this playlist as a conversion into vibrations.

[READ MORE](#)



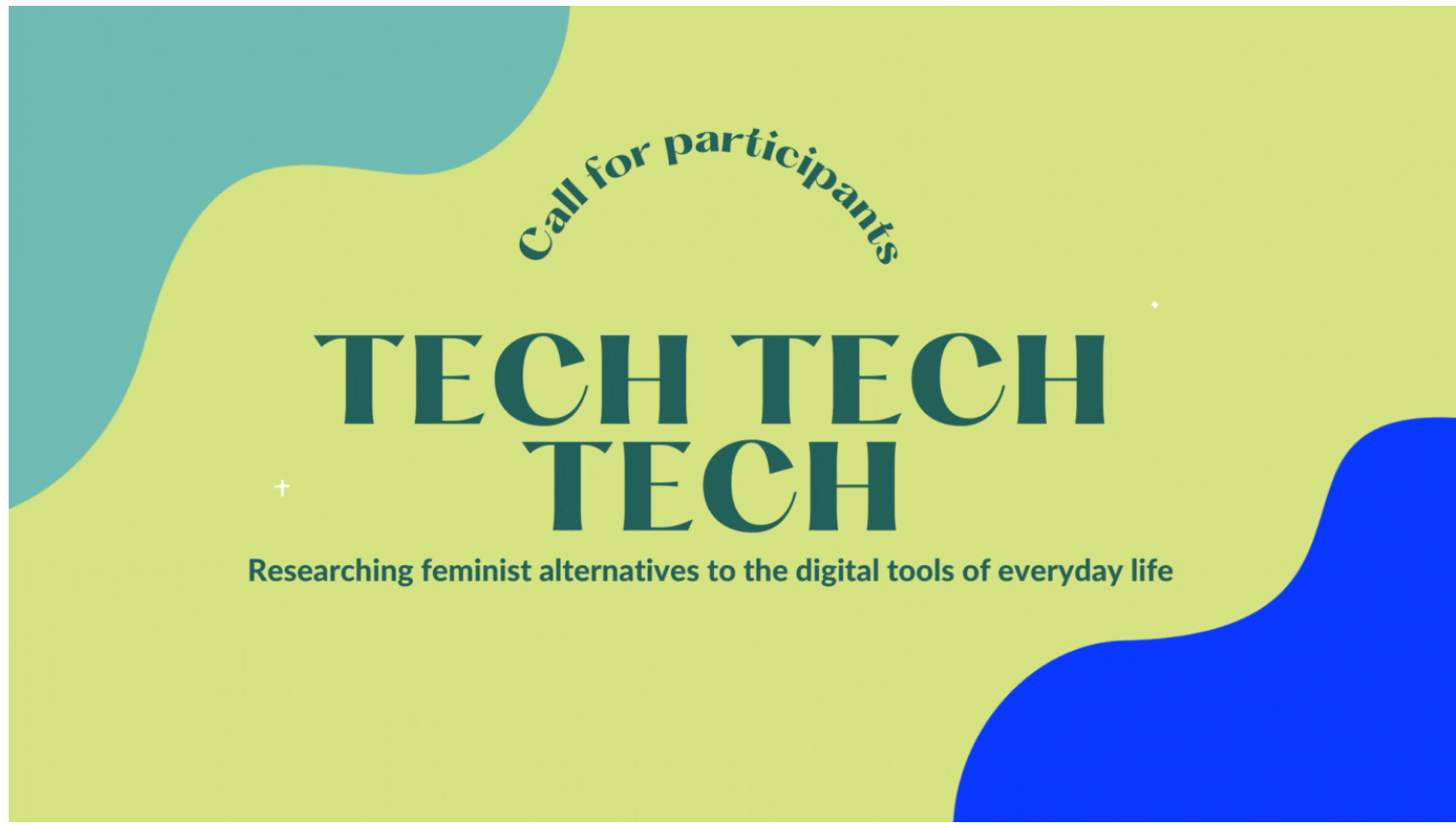
workshop

The sympoiesis of an ambulatory reading circle
With Gisèle Trudel, Susan Turcot, Sylvie Laplante, Émilie Mouchous
May + July
⇓ Botanical Garden

An ongoingness of voice in walking along with a chapter of *Staying with the Trouble: Making Kin in the Chthulucene* by Donna Haraway (2016). Haraway invites to think-with others-than-human. Active listening and audio recording processes will be explored, during the walk and a circle discussion in a small group, while respecting public health instructions.

5 participants max. \$250 honorarium + 2 passes to the Botanical Garden per participant. Send a letter of intent before Friday, April 23rd at noon.

[READ MORE](#)



call

TECH TECH TECH : ethical alternatives to tech giants continues! Meet researchers Liane Décary-Chen and Sarah Choukah [via this link](#) during their office hours, several Thursdays a month, from 11am to 12:30pm. Fill out [this 5-minute survey](#) to have your say in our research and events this year. Sign up for updates at [this link](#). Do you want to get involved?

[READ MORE](#)